



a) Egg with 2 blastomeres



b) Egg with 4 blastomeres



c) Early blastula stage



d) Embryo 13 hours after fertilization



e) Larva just after hatching



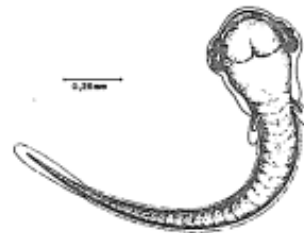
f) Larva 3 hours 30 minutes after hatching



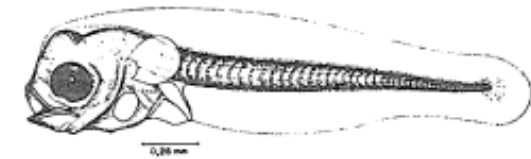
g) Larva 11 hours 30 minutes after hatching



h) Larva 21 hours after hatching



i) Larva 33 hours after hatching



j) Larva 47 hours after hatching



k) Larva 4 days after hatching